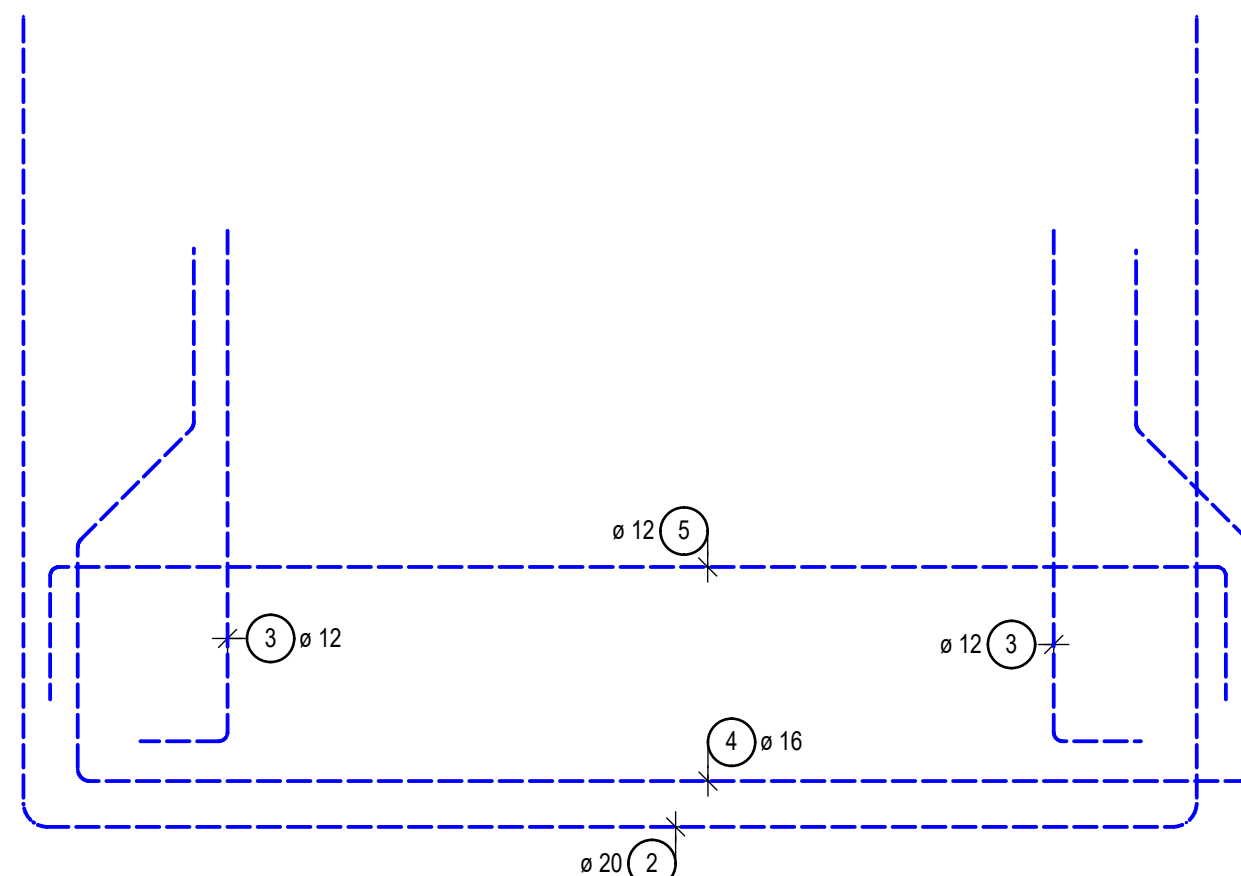


PŮDORYS ZÁKLADOVÉ DESKY



REINFORCEMENT DETAILS

PLAN VIEW

Overall Dimensions: 5980 mm (Length) x 3895 mm (Width)

Reinforcement Details:

- Top Reinforcement: 18 $\phi 40$ 12-150, 12 $\phi 4$ 16
- Bottom Reinforcement: 19 $\phi 25$ 12, 14 $\phi 25$ 8, 14 $\phi 25$ 8
- Vertical Reinforcement: 11 $\phi 12$ 150, 11 $\phi 12$ 200, 11 $\phi 12$ 200
- Horizontal Reinforcement: 15 $\phi 8$ (4 KS/m²) SPONY, 16 $\phi 40$ 12-150, 16 $\phi 40$ 12-150
- Corner Reinforcement: 16 $\phi 8$ 12, 17 $\phi 8$ 12
- Edge Reinforcement: 9 $\phi 12$ 9, 7 $\phi 10$ 150, 8 $\phi 12$ 150, 7 $\phi 10$ 150, 9 $\phi 12$ 9, 3 $\phi 40$ 12-150, 4 $\phi 39$ 16-150, 2 $\phi 40$ 20-150, 5 $\phi 40$ 12-150

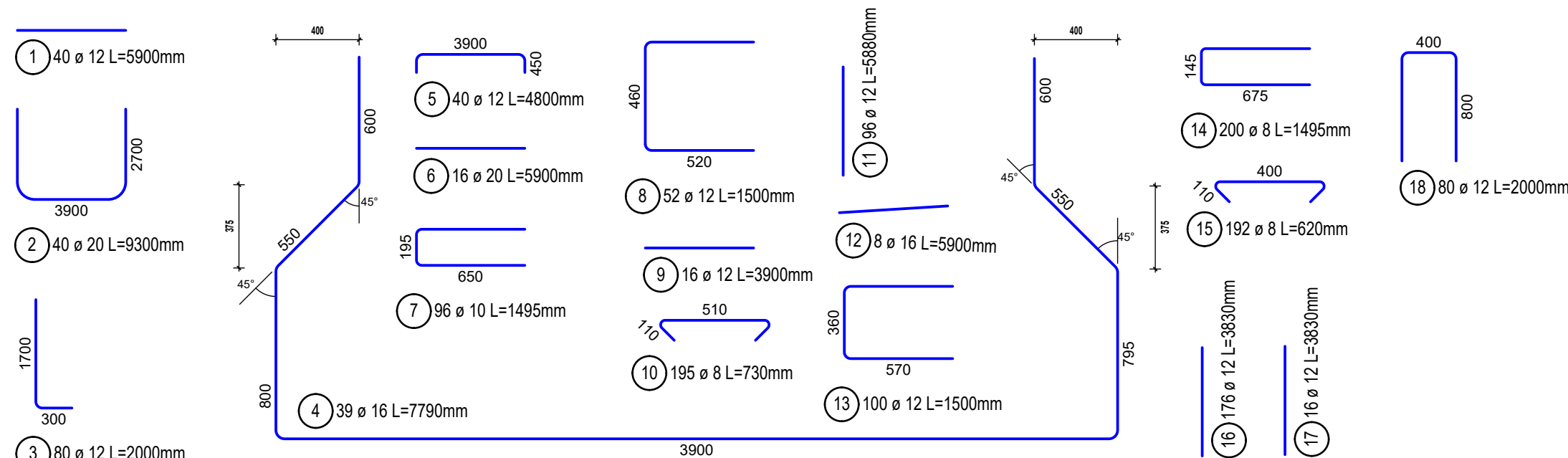
CROSS-SECTION VIEW

Slab Thickness: 110 mm



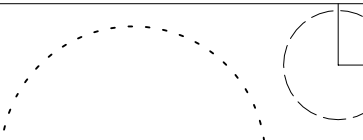
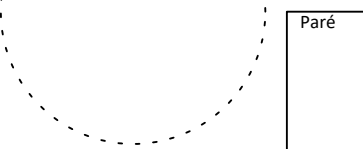
Reinforcement Details:

- Top Reinforcement: 18 $\phi 40$ 12-150, 12 $\phi 4$ 16
- Bottom Reinforcement: 19 $\phi 25$ 12, 14 $\phi 25$ 8, 14 $\phi 25$ 8
- Vertical Reinforcement: 11 $\phi 12$ 150, 11 $\phi 12$ 200, 11 $\phi 12$ 200
- Horizontal Reinforcement: 15 $\phi 8$ (4 KS/m²) SPONY, 16 $\phi 40$ 12-150, 16 $\phi 40$ 12-150
- Corner Reinforcement: 16 $\phi 8$ 12, 17 $\phi 8$ 12
- Edge Reinforcement: 9 $\phi 12$ 9, 7 $\phi 10$ 150, 8 $\phi 12$ 150, 7 $\phi 10$ 150, 9 $\phi 12$ 9, 3 $\phi 40$ 12-150, 4 $\phi 39$ 16-150, 2 $\phi 40$ 20-150, 5 $\phi 40$ 12-150

Technical drawing of a reinforced concrete slab (SPONRY) with dimensions and reinforcement details. The slab is 5980 mm long and 500 mm wide. It features top and bottom reinforcement bars (ø 12, ø 8, ø 10) and stirrups (ø 8). The drawing includes a cross-section view on the right showing the slab thickness and reinforcement layout.

[illegible]

A 3D exploded view of a window frame assembly. The assembly consists of a main frame, a sash, and glazing components. The frame is shown in a light blue color, the sash in a medium blue, and the glazing in a dark blue. The exploded view shows the relative positions of these components, with arrows indicating the direction of assembly. The frame is a rectangular structure with a central opening for the sash. The sash is a rectangular frame that holds the glazing. The glazing is a rectangular panel that fits into the sash. The exploded view shows the frame, sash, and glazing components separated from each other, with arrows indicating the direction of assembly.

PROJEKTANT ČÁSTI 2257 STATIKA		Odp. projektant ING. M.JANÍK <i>h. h. Janík</i>		Vypracoval ING. M.JANÍK <i>h. h. Janík</i>		 STATIKA JANÍK s.r.o. INŽENÝRSKÁ KANCELÁŘ www.statikajanik.cz	
 VODOHOPODPOUŠKÝ ROZVOJ A VÝSTAVBA a.s. Nádražní 4 150 56 Praha 5 DIVČEŮ 06		VÝKOPISNÝ SYSTÉM: BpV POLOHOPIŠNÝ SYSTÉM: S-JTSK					
Navrhl ING. J. HETMÁNEK		Odp. projektant ING. J. HETMÁNEK <i>J. Hetmánek</i>		Techn. kontrola Ing. Pavel Menhard <i>P. Menhard</i>		Paré	
Kval. Moravskoslezský		Odbor		Dětmorovice			
Investor Povodí Odry, státní podnik		K.Ú.		Koutná		Soubor	
Olše, Dětmorovice, zprůchodnění jezu STAVEBNĚ KONSTRUKČNÍ ČÁST VÝKRES VÝZTUŽE RP - dilatační blok č.11						Formát	
						8A4	
						Datum	
						5/2023	
						Stupeň	
						DPS	
						Zakázka	
						5266/006	
						Měřítko	
						Č. výkresu	
						1:25	
						D. 1.2.19	